



BOILER CONTROL, COMBUSTION MANAGEMENT & HARDWARE FOR THE STEAM POWER INDUSTRY

CONTROLS

# Plantwide Control Systems

Plantwide Control Systems, covering all aspects of Industrial Automation Control, are engineered and manufactured by Fossil Power Systems Inc. (FPS). FPS has been supplying control systems since the company was started over 20 years ago, and was the first company in Canada to engineer and supply Burner Automation Systems (BAS) with Programmable Logic Controller's (PLC), which are now the preferred industry standard. Similarly, FPS was one of the first to engineer and supply PLC based Sootblower systems.

Combining in-house manufactured products and a solid understanding of the industry and its processes has made FPS a major supplier of Plantwide Control Systems for utility and industrial boilers, as well as other industrial applications.

FPS engineered control systems are designed to provide continuous, reliable and precise control to meet each customer's specific requirements. Reliability and security are provided through the strategic use of redundant equipment. The technology employed in system packaging is at the leading edge. FPS systems are fully supported and upwardly compatible to ensure portability of software and extended product life.

FPS operator workstations combine an open architecture and robust Microsoft Windows™ operating system to create a powerful graphic control interface. Enhanced quality and utility is available through custom graphics, control, cabinets and operator consoles.

FPS Control Engineers have a constant involvement in system design, from the proposal stage through to the commissioning stage. Typically a project team will have full responsibility for the system and the products and will be dedicated to the project through on-site completion. By having the same engineers involved in all facets of the system integration, we maintain a consistency and responsibility that ensures customer satisfaction. This approach also allows FPS to maintain an efficient and cost effective method of handling projects. This strategy, along with the flexibility of using our own products, has allowed us to continually provide competitive pricing for a superior product. The efficiency and flexibility of our company has also given FPS a distinct advantage by allowing us to supply complete systems with significantly shorter turn-around times.



FPS engineers, manufactures and supplies complete Plantwide Control Systems, including but not limited to:

- Distributed Control Systems (DCS)
- Fuel Safety Systems (FSS)
- Burner Automation Systems (BAS)
- Burner Management Systems (BMS)
- Data Acquisition Systems (DAS)
- Balance of Plant Systems (BOP)
- Supervisory Control and Data Acquisition (SCADA)
- Emergency Shutdown Procedure (ESP)
- Graphical Control System (GCS)
- Sootblower Control Systems
- Turbine Performance Monitoring Control Systems
- Turbine Run-up
- Turbine Water Ingress Prevention
- Boiler/Turbine Co-ordinated Control
- Process Control Systems
- Panel Inserts

Controlling  
the **power**  
of **steam**



## FEATURES OF FPS SYSTEMS

### FACTORY CHECK OUT

Every control system is thoroughly simulated by a control engineer before it is shipped. Adequate notice of simulation dates are provided to the customer, ensuring that their personnel can witness and/or take part in these tests. The system is subject to an extensive burn-in period prior to shipment. Rigorous testing and burn-in eliminates start-up "surprises" and delays.

### SYSTEM APPROVAL

Because of our experience and our willingness to work with many different approval agencies, we have earned a reputation of putting the customer's interest foremost, and of supplying systems that are easily approved by customer specific agencies. We have formed close relationships with many of the large approval and insurance agencies in the industry, and we are more than willing to accept the responsibility of acquiring all necessary system approvals, prior to turning systems over to the customer.

### DRAWINGS & LITERATURE - COMPLETE DOCUMENTATION

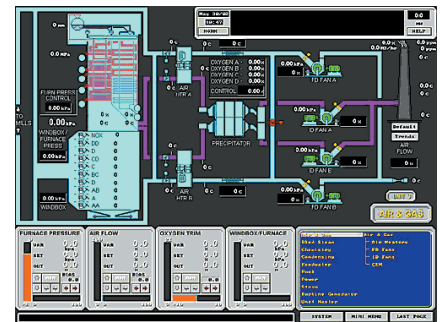
A set of instruction manuals prepared by our technical authors will accompany each system. The manuals are written in a very comprehensive manner that commands attention. Each manual contains a description of the operation of the control system and supplied equipment, along with a complete set of reduced engineering drawings and information on other manufacturer's components.

### SERVICE, MAINTENANCE, AND SPARE PARTS

FPS systems are designed using a minimum number of different component types thus minimizing the spares requirements. A recommended spare parts list and detailed repair instructions are included with each system. FPS engineers and service personnel are always available and ready to provide the client with help when and wherever needed. Control system maintenance is minimal and is generally restricted to the adjustment of a field device.

### INSTALLATION, COMMISSIONING, AND TRAINING

FPS representatives can be made available at the plant site throughout this important phase to instruct the installation contractors on standard or alternate arrangements for all related equipment. FPS site personnel perform an on-site inspection of all field wiring, and after approval is given, the entire system is powered using a pre-determined procedure. FPS's service/commissioning group will then proceed with commissioning, and all necessary training procedures.



DISTRIBUTED BY:



Fossil Power Systems  
10 Mosher Drive Dartmouth, Nova Scotia  
B3B 1N5 Canada  
Phone: 1-902-468-2743  
Fax: 1-902-468-2323

Sales: Sales@Fossil.ca  
Support: Support@Fossil.ca  
Administration: Admin@Fossil.ca  
www.Fossil.ca

AN ISO REGISTERED COMPANY

FEB/03 9290-1000